

marie's corner

DISCOVER

THE EXCLUSIVE DESIGNER BRAND

Collection 2014

WHAT'S INSIDE

Editorial	3
Exclusive creation	4
The designers	6
Style, elegance, comfort and grace	8
New models	20
The sofas	24
The armchairs	42
The chairs	56
The poufs	64
Finishing collection	72
The fabrics	74
The Tables	80
Tables finishing	83
Accessories	84
The outdoor collection	85
World references	90
The collection overview	94





MARIE'S CORNER: WHAT MAKES US DIFFERENT?

Our vocation is built on tradition. Our ambition is to open the doors of a new world culture and to tomorrow's communication tools.

In this very competitive world, we stand out. Since we started, we have been creating unique models that we build individually by hand using traditional techniques according to the finish – and sometimes the dimensions - of the clients. Each item is unique, and for clients of exception.

Through the Internet and global communications, Marie's Corner is increasingly defining itself in terms of a new world culture of good taste and comfort. We the founders of Marie's Corner are citizens of this new world that knows no borders, where each culture can be heard and bring its own richness to human values. We want our brand to embody these aspects and riches.

For two years already, we have been re-thinking the style of Marie's Corner and developing production in two continents with strong identities and cultures, Europe and the US. In real terms, this had led to a range that is richer and more varied, in terms of the profiles, production techniques, comfort and the appearance of new functions.

The Marie's Corner 2014 catalogue, which you are now reading, allows us to increasingly include digital tools in our communications. Its mission is to harness these new techniques to provide greater service. For example, QR codes give you direct access to all the technical information about each product via the web using a smartphone or tablet application.

The world is changing and we are moving with it – and you.

Ullon.

Alain Low

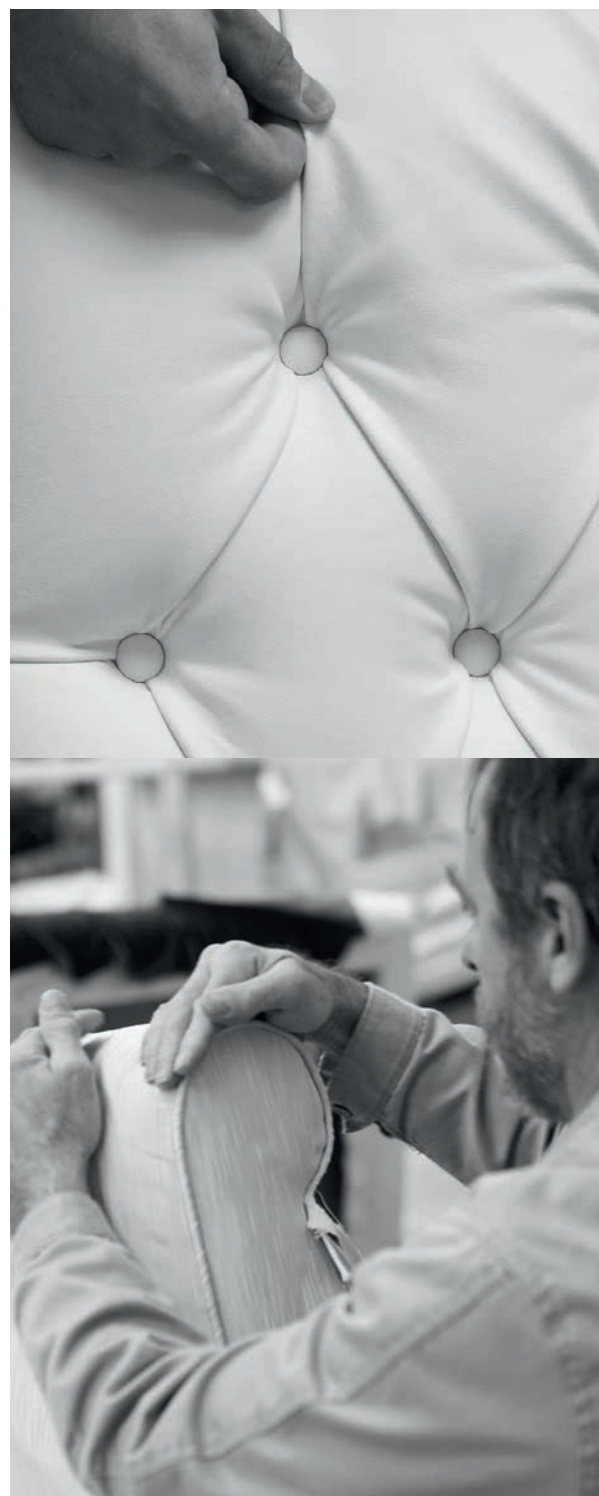
EXCLUSIVE CREATION

TRADITION AND EXCLUSIVITY MADE BY HAND...

In the extraordinarily rational world we live in, we have decided to go for the exceptional and for tradition. A mixture of two cultures, a personal product with a contemporary aesthetic, exclusively made by hand.

Our products are made to order, individually and to the customer's stipulations. We can produce in quantity, too, but always with the same respect for tradition.

We are craftsmen and proud of it.





EXCLUSIVITY AND FLEXIBILITY

Marie's Corner considers itself very much a designer brand. It offers only models that have been exclusively designed in its own workshops and finished at the customer request, in some cases with the dimensions the customer chooses. If you have ideas, anything is possible. Furniture can be finished with fabrics from Marie's Corner or customers' own.

Our job is to make exclusive products that can be adapted to suit our customers' tastes and styles.

QUALITY CONSTRUCTION AND FINISHING

All our chairs and sofas are made with solid wood structures. The main parts are in beech and the secondary parts in pine. They are assembled with mortise and tenon joints. The legs are an integral part of the frame. Leg models vary depending on the chair and casters are sometimes an option. Customers may choose the colours and finish to harmonise with their interiors. To make the construction base of the various models, the frames, backs and seats are covered with webbing and then stuffed with a mixture of different types of foam rubber in order to achieve the desired comfort appropriate to each model.

The upholstery is done following a traditional method. The fabrics are cut out using the pattern for the model and are stretched over the chairs in an artisanal fashion. Usually the upholstery is fixed but certain models have slipcovers. Depending on the models and their uses, we offer different types of seating comfort, which can be modified to suit the customer.

For the finishes, Marie's Corner always works with very natural, living materials. We offer a wide variety of finishes comprising nearly 50 different qualities and 500 colours which can be combined as the customer chooses.

Like the rest of the range, Marie's Corner tables are high quality products. Whether they are solid wood or veneer they are always produced from top quality materials (olive, walnut, classic or smoked oak) and like the rest of our furniture they are made by specialised craftsmen. Fabric samples on demand.

THE DESIGNERS

DYNAMISM, CREATIVITY AND INSPIRATION

From the start it was Laetitia Zichy-Low's dynamism that was behind the creativity and inspiration at Marie's Corner. Following the brand's success, she was joined after a few years by Jacques Deneef, a designer with experience in luxury and exceptional products.

Today the two of them are responsible for the dual development of the brand, in which varied stylistic and thematic as well as geographic and cultural influences meet, and of course they bring both a male and a female vision to it.

Together they imbue the brand with all the values and riches that make Marie's Corner successful.





Jacques Deneef and Laetitia Zichy-Low

STYLE, ELEGANCE, COMFORT AND GRACE



Toledo pouf lined Bess,
Peale, and Milo





There is the style we show during presentations at trade fairs, there is the style we present in photos taken to create specific atmospheres, there are the styles we discover when we are filling orders for clients more or less all over the world, and then there are the styles customers have in mind and want to produce.

A model from Marie's Corner, whatever it is, always conveys good taste and luxury, however it is finished. The variety of coverings and finishes means that, depending on the choices made by the customers, decorators or interior designers, our products can be integrated into projects that are stylistically very different. Classic, modern, vintage, graphic or discrete, it's up to you to choose. They will always fit in perfectly.

That is why the armchairs, sofas, chairs, poufs, tables and accessories from Marie's Corner are such exceptional and much appreciated products. The following pages show some different sorts of style and good taste.



Jack-f armchair lined peale



Weldon sofa lined Goldin / Springfield side table



Wilmington sofa and cushion lined Goldin



Fayetteville armchair lined Ruffin / Springfield coffee table

Pierson armchair lined velvet Milo





Pierson armchair lined velvet Milo

Dartmouth/2 sofa lined Jones, Boowie table,
Collin pouf lined Jones and Sloan



Denver armchair lined velvet Milo / Tukori dining table





Matthews armchair with nails lined velvet Milo



Pebbles tables / Thomasville sofa lined Lassaw





Dakota lined Bess and cushions lined Milo



Hollywood sofa lined Beuys, Colby armchair lined Russel, Collin pouf in Allen



Collin in Shaw fabric



Atlanta with buttons lined Shaw



Carmel armchair in Shetland



Cushions Wilmington sofa lined Goldin



Anniston lined Blunt



Back of Manchester lined Curtis



Oldson armchair in leather cognac



Reno armchair lined Savery



Anniston armchair in cow and Bess



Fayetteville armchair lined velvet Milo



Washington sofa lined Allen



Pebbles tables



Pasadena sofa lined Allen



Footstool pouf lined velvet Allen

NEW ^N MODELS

**THE WORLD IS A GARDEN FULL
OF IMMEASURABLE TREASURES
OF IDENTITIES AND STYLES**

The way the Marie's Corner range is evolving is an eloquent reflection of our wish for the harmonious co-existence of different cultures, an essential value that we defend and to which we subscribe.

This year, we're offering twenty or so new models inspired by several different continents.



MORE INFO ON
WWW.MARIESCORNER.COM



clinton

This sofa fully upholstered or with slipcover and straight, clean lines is available in three different sizes, 190cm, 213cm, 254cm, the first two with sofa-bed option. This model can also be made in leather.



pinehurst

This new and very architectural winged armchair has a very modernistic design with its structural legs in very visible square-shaped oak.



duke

Is a bistro-style chair, with a round seat and padded back for complete comfort.

modesto

Marie's Corner introduces a logical development of the successful Manchester models with a new function, that of the occasional armchair.





anniston swivel

This is a variation of the Anniston model, here shown with a skirt to incorporate the swivel system.



edison

This small trapezoid-shaped armchair with clean, very pure lines comes fully upholstered or with slipcover and with or without the swivel system.



appleton

Appleton is a small, round and user-friendly model for home or work offering very soft comfort.



denver-c

Marie's Corner presents a logical development of a successful model, the Denver chair, with a new function, the bar stool.



erwin

This new padded model completes the range of pouf with new shape variants, round or oval. It is available in five different sizes and as an option on casters.



lawrence

Is a family of models in a classic style, fully upholstered or with slipcover. The range includes a one-seat armchair, long chair and sofa with two (198cm), three (228cm) or four-seats (260cm).



nicholls

Perfect for the hotel business, this sofa-bed provides a very high quality of comfort. A special feature is that it opens horizontally like a drawer to give two different configurations, either a large double bed or two twin beds on two levels. It comes as a two seats 221 cm only, with fixed covers.



gray

The Gray sofa is a classic model with a touch of château-farmhouse style, with fixed cover and skirt. It comes in one size 241cm.



louisburg

A nature-inspired loose-cover sofa which comes in three sizes, 201cm, 231cm and 260 cm. This model is also available as a one-seat armchair with the swivel system.



lancaster

In the Lancaster family, following the armchair, the two- and three-seats sofas, here is the new little addition, the pouf. Fully upholstered or with slipcover.



liberty

Here's the latest little member of the family, the Liberty pouf, available fully upholstered or with slipcover.



jamestown

Is the new arrival of the Jackson family, the sofa version of this very successful model. This model comes, fully upholstered.



hamlet

The Hamlet model has the clean and timeless lines so appreciated by modernist architects and contemporary decorators. This model with fixed covers is available in two sizes 183cm and 213cm. It is also comes in Hamlet modular version.

This range comprises a set of modules to allow for a number and variety of different layouts to suit the customer. It can therefore be placed in all types of spaces, small, medium or large. Ten modules, one, two or three-seats, corner, long chair, pouf and day bed are offered in the range.



tryon

This long pouf (175 cm) on casters goes perfectly with the new Pinehurst chair with its architectural square legs in solid oak and seat in padded upholstery.





monroe

This small and compact armchair with studs is poised between the original aesthetic of curve and counter-curve and straight lines. This model has a studded finish, giving it a very "old stately home" appearance. Available fully upholstered or with slipcover.



floyd

Oak structure. Fully upholstered.



joplin

With dynamic lines, this model explores a new aesthetic combination to create a new, more disciplined square-shaped style.

gwinnett

The seat and back of this very square-shaped slipcover model offer the softest comfort. It is available as a one-, two (198cm), three (228cm) or four-seat (260cm).



Exclusive new finish 'patchworks'

This year, Marie's Corner is offering a very exclusive and fashionable finish. A trend and style with a very vintage feel: patchwork with a nod to the hippy era of the 1960s.

Based on recycling and on the second life of the garments, Marie's Corner use exclusive and fashionable materials, specially created from collected clothing: a unique, innovative and unlimited resource.

Marie'sCorner use a range of eco-friendly products with a reduced ecological footprint an authentic vintage materials and relies on the concept of the second life garment a personalized response to each client's order. This unlimited resource stimulates creativity and innovation of our customers' design teams. Other colors and informations on demand.



THE SOFAS

COMFORT AND BEAUTIFUL DESIGN

This year the collection has evolved a lot and offers a choice of very different models for numerous environments, a variety of styles and both private and professional use. But as always, what all these models have in common is comfort and beautiful design.



MORE INFO ON
WWW.MARIESCORNER.COM



augusta long

Beechwood feet. Fully upholstered. Exist in armchair.
d: 157 cm x h: 100 cm x seat.

seats	long chair
width	130 cm
length of fabric	11 m



baby blues

Beechwood feet. Fully upholstered. Exist in armchair.
Available with bed*. d: 80 cm x h: 75 cm x seat.

seats	1,5	2*
width	125 cm	145 cm
length of fabric	7 m	9 m



alton

Beechwood feet. Fully upholstered. Exist in armchair (Anniston).
Only available in a limited selection of fabrics (see pricelist).
d: 85 cm x h: 94 cm x seat.

seats	2
width	140 cm
length of fabric	6,5 m



broadway

Beechwood feet. Fully upholstered. d: 105 cm x h: 72 cm x seat.

seats	2	3	4
width	180 cm	220 cm	260 cm
s&b cushions	2/2	2/3	2/4
length of fabric	14 m	16 m	19 m



brad

Beechwood feet. Fully upholstered. d: 95 cm x h: 85 cm x seat.

seats	2,5	3	3,5
width	200 cm	230 cm	260 cm
s&b cushions	2	2	2
length of fabric	11,5 m	13 m	15 m



bradford

Beechwood feet. Fully upholstered. d: 100 cm x h: 93 cm.

seats	2,5	3	3,5
width	195 cm	225 cm	250 cm
s&b cushions	2	3	3
length of fabric	14,5 m	15 m	16 m



burbank

Oak frame and base. Fully upholstered. d: 86 cm x h: 80 cm x seat.

seats	2	3
width	142 cm	210 cm
s&b cushions	2	3
length of fabric	8 m	12 m



branson sofa & pebbles tables



slipcover

N clinton

Maple feet. Fully upholstered or with slipcover. Exist in armchair.
Available with bed*: d: 97 cm x h: 89 cm x seat.

seats	1	2*	3*	4
width	74 cm	190 cm	213 cm	254 cm
s&b cushions	1/1	1/2	1/3	1/4
length of fabric	-	11 m	12 m	14 m
bed	-	132x183	152x183	
slipcover	7,5	13 m	15 m	17 m



club-house

Beechwood feet. Fully upholstered with buttons. Exist in armchair.
d: 90 cm x h: 70 cm x seat.

seats	1	2	2,5	3
width	105 cm	180 cm	195 cm	215 cm
seat cushions	1	2	2	2
length of fabric	7 m	10 m	13 m	14 m



branson

Beechwood feet. Fully upholstered.
Exist in armchair. h: 94 cm.

seat	branson/1	branson/2	branson/3	branson/4	branson long chair/1	branson long chair/2	branson long chair/3	branson long chair/4
width	95 cm	115 cm	115 cm	135 cm	95 cm	115 cm	115 cm	135 cm
depth	95 cm	95 cm	95 cm	95 cm	160 cm	160 cm	160 cm	160 cm
s&b cushions	1	1	1	1	1	1	1	1
length of fabric	7 m	8 m	8 m	9 m	7,5 m	8,5 m	8,5 m	9,5 m
seat	branson corner	branson pouf	branson pouf	branson 2s/1	branson 2s/2	branson 2s/3	branson 2s/4	
width	95 cm	95 cm	95 cm	190 cm	210 cm	210 cm	230 cm	
depth	95 cm	95 cm	60 cm	95 cm	95 cm	95 cm	95 cm	
s&b cushions	1/2	1	1	2	2	2	2	
length of fabric	8 m	3,5 m	2,5 m	11 m	12 m	12 m	13 m	

concord

Fully upholstered or with slipcover. Available with bed*.
Exist in armchair. d: 104 cm x h: 97 cm x seat.

seats	1	2*	3*
width	99 cm	206 cm	240 cm
length of fabric	10 m	17,5 m	21 m
bed	-	132x183	152x183
length of fabric/bed	-	16,5	19,5





dartmouth/2s

Beechwood base. Fully upholstered. Exist in armchair.
d: 68 cm x h: 75 cm x seat.

seats	2
width	160 cm
length of fabric	4,5 m



fayetteville

Fully upholstered. Exist in armchair.
d: 99 cm x h: 84 cm x seat.

seats	1	2	3
width	71 cm	198 cm	228 cm
s&b cushions	1/1	2/2	2/2
length of fabric	7,5 m	13 m	15 m



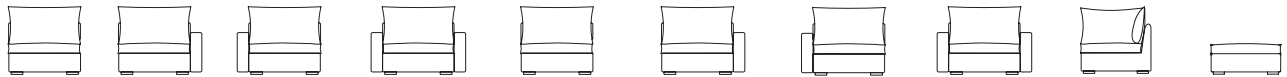
slipcover

dakota modular

Beechwood feet. Fully upholstered or with slipcover. Slipcover only available in plain fabric. Exist in armchair. h: 90 cm x seat.



fully upholstered



	dakota/1	dakota/2	dakota/3	dakota/4	dakota long/1	dakota long/2	dakota long/3	dakota long/4	dakota corner	dakota pouf
seat										
width	95 cm	110 cm	110 cm	125 cm	95 cm	110 cm	110 cm	125 cm	95 cm	95 cm
depth	95 cm	95 cm	95 cm	95 cm	165 cm	165 cm	165 cm	165 cm	95 cm	95 cm
s&b cushions	1	1	1	1	1	1	1	1	1/2	1
length of fabric	6 m	7,5 m	7,5 m	8,5 m	8 m	9 m	9 m	10 m	8 m	5,5 m
slipcover	6 m	8 m	8 m	9 m	8 m	9,5 m	9,5 m	10,5 m	8,5 m	5,5 m



	dakota 2s/1	dakota 2s/2	dakota 2s/3	dakota 2s/4	dakota 3s/1	dakota 3s/2	dakota 3s/3	dakota 3s/4
seat								
width	190 cm	205 cm	205 cm	220 cm	285 cm	300 cm	300 cm	315 cm
depth	95 cm	95 cm	95 cm	95 cm	95 cm	95 cm	95 cm	95 cm
s&b cushions	2	2	2	2	3	3	3/2	3
length of fabric	11,5 m	13 m	13 m	14 m	17 m	18,5 m	18,5 m	19,5 m
slipcover	12 m	13,5 m	13,5 m	14,5 m	17,5 m	19 m	19 m	20 m



flint/2

Beechwood base. Fully upholstered. Exist in armchair.
d: 81 cm x h: 80 cm x seat.

seats	1,5
width	136 cm
length of fabric	5,5 m



leftside

georgetown

Beechwood base. Fully upholstered. Also available in right side.
d: 80 cm x h: 88 cm x seat.

seats	long chair
width	190 cm
length of fabric	11 m
extra cushions	1



dakota sofa lined bess & pebbles tables



georgia

Beechwood base Fully upholstered. Exist in armchair. d: 95 cm x h: 89 cm x seat.

seats	2	2,5	3	3,5	4
width	150 cm	170 cm	195 cm	230 cm	250 cm
extra cushions	2	3	3	4	4
length of fabric	10 m	11 m	12 m	14 m	16 m



n gray

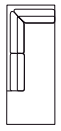
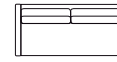
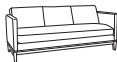
Fully upholstered. d: 102 cm x h: 94 cm x seat.

seats	2
width	241 cm
length of fabric	18 m



n hamlet modular

Oak base. Fully upholstered. h: 90 cm x seat.



seat	hamlet 2s	hamlet 3s	hamlet 2s/2	hamlet 2s/3	hamlet 3s/2	hamlet 3s/3	hamlet long/2	hamlet long/3	hamlet bumper/2	hamlet bumper/3
width	183	213	183 cm	183 cm	221 cm	221 cm	89 cm	89 cm	89 cm	89 cm
depth	89	89	90 cm	90 cm	90 cm	90 cm	183 cm	183 cm	221 cm	221 cm
s&b cushions	1/2	1/3	1/2	1/2	1/2	1/2	1	1	1	1
length of fabric	12 m	14 m	11 m	11 m	12 m	12 m	11 m	11 m	13 m	13 m



seat	hamlet corner	hamlet/1	hamlet 2s/1	hamlet pouf
width	90 cm	90 cm	183 cm	90 cm
depth	90 cm	90 cm	90 cm	90 cm
s&b cushions	1/2	1/2	1/2	1
length of fabric	8 m	6 m	10 m	4 m



gwinnett

Upholstered with slipcover. Exist in armchair.
d: 92 cm x h: 86 cm x seat.

seats	1	2	3	4
width	84 cm	198 cm	228 cm	260 cm
s&b cushions	1	1/4	1/5	1/5
length of fabric	9 m	16 m	18 m	21 m



henderson

Maple feet. Fully upholstered. d: 86 cm x h: 84 cm x seat.

seats	2	3
width	175 cm	213 cm
length of fabric	11 m	13 m



helena

Beechwood base. Fully upholstered. d: 98 cm x h: 88 cm x seat.

seats	3	4
width	230 cm	260 cm
s&b cushions	2/2(49x55) - 3(45x45) + 1,40m + 1,80m	2/2(49x55) - 3(45x45) + 1,40m + 1,80m
length of fabric	12 m	13 m



hollywood

Beechwood base. Fully upholstered. d: 95 cm x h: 87 cm x seat.

seats	1,5	2	2,5	3	4
width	140 cm	170 cm	200 cm	230 cm	260 cm
extra cushions	1	2	2	2	2
length of fabric	8,5 m	9,5 m	10,5 m	11,5 m	12,5 m



hollywood with buttons

Beechwood base. Fully upholstered. d: 95 cm x h: 87 cm x seat.

seats	1,5	2	2,5	3	4
width	140 cm	170 cm	200 cm	230 cm	260 cm
extra cushions	1	2	2	2	2
length of fabric	9,5 m	11 m	12,5 m	13,5 m	15 m



jacksonville 

Maple feet. Fully upholstered. Only available in a limited selection of fabrics. (see pricelist). d: 76 cm x h: 113 cm x seat.

seats	long chair
width	180 cm
length of fabric	8,5 m



judd/2

Beechwood base. Fully upholstered. Exist in armchair.
d: 70 cm x h: 75 cm x seat.

seats	1	2
width	55	115 cm
length of fabric	2,5 m	4 m



key west

Beechwood feet. Fully upholstered. Exist in armchair.
d: 85 cm x h: 77 cm x seat.

seats	1	2	2,5	3	3,5
width	79 cm	180 cm	205 cm	230 cm	250 cm
s&b cushions	1/1	2/2	2/2	2/2	2/2
length of fabric	5,5 m	12 m	14 m	15 m	16 m



kingstone 

Maple feet. Fully upholstered.
d: 102 cm x h: 97 cm x seat.

seats	1,5	2	3
width	130 cm	216 cm	241 cm
s&b cushions	1/2	1/2	1/2
length of fabric	11 m	16 m	18 m



jamestown

Maple feet. Fully upholstered. d: 101 cm x h: 89 cm x seat.

seats	3
width	234 cm
length of fabric	16 m



lancaster

Maple feet. Fully upholstered or with slipcover. Exist in armchair.
d: 112 cm x h: 87 cm x seat.

seats	1	2	3
width	92 cm	216 cm	247 cm
s&b cushions	1/1	2/4	3/5
length of fabric	10 m	19 m	20 m
slipcover	11 m	20 m	21 m



right side

jazz

Beechwood feet. Fully upholstered. Also available in left side.
d: 80 cm x h: 65 cm x seat.

seats	long chair	long chair	long chair
width	140 cm	160 cm	180 cm
s&b cushions	1/1	1/2	1/2
length of fabric	9 m	10 m	11 m



kansas

Beechwood feet. Fully upholstered. Only available with bed.
d: 100 cm x h: 88 cm x seat.

seats	2	2,5	3
width	166 cm	186 cm	206 cm
bed	120x195x13	140x195x13	160x195x13
length of fabric	10,5 m	11,5 m	12,5 m



laredo

Beechwood feet. Fully upholstered. Only available with bed.
d: 100 cm x h: 88 cm x seat.

seats	2	2,5	3
width	166 cm	186 cm	206 cm
bed	120x195x13	140x195x13	160x195x13
length of fabric	10,5 m	11,5 m	12,5 m





liberty 

Fully upholstered or with slipcover. Exist in armchair.
d: 96 cm x h: 84 cm x seat.

seats	1	2	3	4
width	76 cm	198 cm	228 cm	260 cm
length of fabric	6,5 m	14 m	15 m	16 m



long chair

left side

Beechwood feet. Fully upholstered.
Also available in right side. d: 70 cm x h: 85 cm x seat.

seats	long chair
width	165 cm
length of fabric	5 m



lawrence 

Fully upholstered or with slipcover. Exist in armchair.
d: 97 cm x h: 84 cm x seat.

seats	1	2	3	4
width	76 cm	198 cm	228 cm	260 cm
back cushions	1	2	2	2
length of fabric	7 m	12 m	14 m	16 m



lawrence long 

Upholstered with slipcover. d: 97 cm x h: 84 cm x seat.

seats	1
width	152 cm
length of fabric	12 m



louisburg 

Upholstered with slipcover. Exist in armchair.
d: 102 cm x h: 91 x seat.

seats	2	3	4
width	201 cm	231 cm	260 cm
length of fabric	17 m	19 m	21 m



louisiane

Beechwood feet. Fully upholstered. Exist in armchair.
d: 95 cm x h: 85 cm x seat.

seats	1	2	2,5	3
width	90 cm	165 cm	180 cm	200 cm
extra cushions	1	3	4	4
length of fabric	6,5 m	9,5 m	11 m	13 m



madison

Beechwood feet. Fully upholstered or with slipcover. d: 98 cm x h: 77 cm x seat.

seats	1	2	2,5	3	3,5
width	100 cm	170 cm	210 cm	250 cm	270 cm
s&b cushions	1*	2/7**	2/8**	2/9**	2/9**
length of fabric	7,5 m	12 m	14 m	15 m	17 m
slipcover	8,5 m	13 m	15 m	16 m	18 m



marius

Beechwood feet. Fully upholstered. d: 100 cm x h: 88 cm x seat. extra cushions 2.

seats	1	2	2,5	3	3,5	4
width	100 cm	170 cm	190 cm	210 cm	230 cm	250 cm
length of fabric	9,5 m	13,5 m	14,5 m	15,5 m	16,5 m	17 m



matthews 

Maple feet. Fully upholstered with nails (see p.73)
or with skirt. Exist in armchair. d: 107 cm x h: 99 cm x seat.

seats	1	3
width	84 cm	223 cm
length of fabric	7,5 m	16 m
with skirt	8,5 m	16,5 m



newton

Maple feet with casters. Fully upholstered with nails (see p.73). d: 99 cm x h: 89 cm x seat.

seats	2	3
width	200 cm	231 cm
extra cushions	2	2
length of fabric	14 m	16 m



New York Corner 1
left side

new york corner

Beechwood feet. Fully upholstered. Also available in right side.
d: 100 cm x h: 75 cm x seat.

seats	corner1	corner1	corner1	corner2	corner2	corner2
width	310/215	310/405	310/310	190/270	190/300	190/330
s&b cushions	3/9	3/12	3/10	3/6	3/7	3/8
length of fabric	28 m	35 m	31 m	20 m	24 m	27 m

New York Corner 2
left side



new york

Beechwood feet. Fully upholstered. Exist in armchair.
d: 100 cm x h: 75 cm x seat.

seats	1	2	3	4
width	105 cm	190 cm	230 cm	270 cm
s&b cushions	1/1	2/4	2/4	2/5
length of fabric	8 m	13 m	15 m	17 m



nicholls

Maple feet. Fully upholstered. Only available with bed.
d: 102 cm x h: 86 cm x seat.

seats	3
width	221 cm
length of fabric	17 m





pasadena 

Oak base. Fully upholstered with nails (see p.73).
d: 100 cm x h: 85 cm x seat.

seats 2,5
width 190 cm
length of fabric 11 m



oakland

Beechwood base. Fully upholstered. d: 100 cm x h: 85 cm x seat.

seats 3
width 230 cm
length of fabric 15 m



queens

Beechwood feet. Fully upholstered. d: 105 cm x h: 95 cm x seat.

seats	2	3	3,5
width	180 cm	210 cm	250 cm
s&b cushions	2/2(50x50)-2(60x60)	2/3(50x50)-2(60x60)	2/3(50x50)-3(60x60)
length of fabric	16 m	17 m	18,5 m



soho

Beechwood feet. Fully upholstered. d: 100 cm x h: 83 cm x seat.

seats	1	2	2,5	3	3,5	4
width	100 cm	165 cm	185 cm	205 cm	225 cm	250 cm
s&b cushions	1/1	1/3	1/4	1/4	1/4	1/5
length of fabric	7 m	12 m	13 m	14 m	15 m	17 m



thomasville

Upholstered with slipcover. d: 95 cm x h: 110 cm x seat.

seats	2	3
width	170 cm	235 cm
s&b cushions	1/4	1/5
length of fabric	15 m	20 m



washington corner

Upholstered with slipcover. Also available in left side.
d: 100 cm x h: 84 cm x seat.

seats	corner
width	180/310 cm
length of fabric	25 m



washington

Upholstered with slipcover. d: 100 cm x h: 84 cm x seat.

seats	3	3,5	4
width	200 cm	230 cm	260 cm
length of fabric	14 m	15 m	17 m



weldon



Upholstered with slipcover. d: 95 cm x h: 110 cm x seat.

seats	2	3
width	200 cm	236 cm
back cushions	1/4	1/5
length of fabric	16,5 m	17,5 m



right side



westfield



Maple feet. Fully upholstered or with slipcover. d: 105 cm x h: 94 cm x seat.

seats	2	3
width	200 cm	235 cm
length of fabric	14 m	16 m



wilmington



Maple feet. Fully upholstered or with slipcover. d: 110 cm x h: 87 cm x seat.

seats	1,5	2	3
width	145 cm	215 cm	255 cm
s&b cushions	1/2	1/4	1/5
length of fabric	11 m	15 m	18 m



OVERVIEW

THE SOFAS



alton



augusta long



babyblues



brad



bradford



branson



broadway



burbank



N clinton



club-house



concord



dakota



dartmouth/2



fayetteville



flint/2



georgetown



georgia



N gray



N gwinnett



N hamlet



helena



henderson



hollywood



hollywood with buttons



jacksonville



N jamestown



jazz



judd/2



kansas



key west



kingstone



lancaster



laredo



N lawrence



N lawrence long



liberty



long chair



N louisburg



louisiane



madison



marius



matthews



newton



new york



new york corner



N nicholls



oakland



pasadena



queens



soho



thomasville



washington



washington corner



weldon



westfield



wilmington

THE ARMCHAIRS

DESIGN, LUXURY, CLASS & DYNAMISM

We have expanded the range with some very classic models which, depending on the way they are upholstered, express beautiful design, luxury, class and dynamism, as required by passionate amateur decorators or professionals.



MORE INFO ON
WWW.MARIESCORNER.COM



alabama

Beechwood feet. Fully upholstered.
w: 80 cm x d: 80 cm x h: 100 cm
seat height 42 cm
length of fabric 4 m



appleton

Beechwood feet. Fully upholstered.
w: 59 cm x d: 70 cm x h: 76 cm
seat height 40 cm
length of fabric 3 m



anderson

Beechwood feet. Fully upholstered.
w: 65 cm x d: 73 cm x h: 90 cm
seat height 40 cm
length of fabric 2,5 m



anniston

Beechwood feet. Fully upholstered. Exist in sofa.
Only available in a limited selection of fabrics
(see pricelist). w: 67 cm x d: 79 cm x h: 85 cm
seat height 45 cm
length of fabric 4 m



N anniston swivel

Fully upholstered.
w: 67 cm x d: 79 cm x h: 84 cm
seat height 45 cm
length of fabric 5 m



asheboro

Maple feet. Fully upholstered
or with slipcover. Available with swivel.
w: 81 cm x d: 94 cm x h: 96 cm
seat height 46 cm
length of fabric 8,5 m



atlanta

Beechwood feet. Fully upholstered.
Feet: Archer, Mitchell (see p.72).
w: 75 cm x d: 87 cm x h: 90 cm
seat height 45 cm
length of fabric 5 m



atlanta with buttons

Beechwood feet. Fully upholstered.
Feet: Archer, Mitchell (see p.72).
w: 75 cm x d: 87 cm x h: 90 cm
seat height 45 cm
length of fabric 6 m



augusta

Beechwood feet. Fully upholstered.
Exist in sofa. d: 97 cm x h: 100 cm
seat 1 1,5
width 100 cm 130 cm
seat height 50 cm 50 cm
length of fabric 7 m 9 m



baby blues

Beechwood feet. Fully upholstered.
Exist in sofa. w: 80 cm x d: 80 cm x h: 75 cm
seat height 46 cm
length of fabric 5 m



boonville

Maple feet. Fully upholstered.
w: 74 cm x d: 89 cm x h: 84 cm
seat height 46 cm
length of fabric 5,5 m



brazil

Fully upholstered with buttons.
Swiveling aluminium foot.
w: 75 cm x d: 87 cm x h: 90 cm

seat	1	small
width	53 cm	45 cm
depth	93 cm	75 cm
height	100 cm	87 cm
seat height	48 cm	37 cm
length of fabric	3 m	2 m

clinton

Maple feet. Fully upholstered or with slipcover or skirt. Available with swivel and glider. Exist in sofa.
w: 74 cm x d: 97 cm x h: 89 cm

seat height	45 cm
length of fabric	7,5 m



brentwood

Oak frame and base. Fully upholstered.
w: 55 cm x d: 56 cm x h: 65 cm

seat height	37cm
length of fabric	1 m



chelsea

Beechwood feet. Fully upholstered.
w: 85 cm x d: 80 cm x h: 93 cm

seat height	41 cm
length of fabric	4 m



chelsea with buttons

Beechwood feet. Fully upholstered with buttons.
w: 85 cm x d: 80 cm x h: 93 cm

seat height	41 cm
length of fabric	5 m



bruce

Beechwood feet. Fully upholstered.
w: 70 cm x d: 85 cm x h: 82 cm
seat height 47 cm
length of fabric 5 m



carmel and pouf



open arms

carmel

Oak frame and base. Fully upholstered.
Available with arms or open armrest.
w: 68 cm x d: 74 cm x h: 74 cm
seat height 43 cm
length of fabric 3,5 m
fabric open armrest 3 m



clayton

Oak frame and base. Fully upholstered.
w: 68 cm x d: 78 cm x h: 110 cm
seat height 43 cm
length of fabric 5 m



carmel pouf



colby

Beechwood feet. Fully upholstered.
w: 65 cm x d: 75 cm x h: 65 cm
seat height 42 cm
length of fabric 4,5 m



colombus

Beechwood feet. Fully upholstered with nails
(see p.72). w: 71 cm x d: 81 cm x h: 78 cm
seat height 42 cm
length of fabric 4,5 m



concord

Fully upholstered. Available with slipcover.
Also Exist in sofa. w: 109 cm x d: 99 cm x h: 96 cm
seat height 46 cm
length of fabric 10 m



copperfield pouf

copperfield

Beechwood feet. Fully upholstered.
Feet: Daly. w: 80 cm x d: 85 cm x h: 105 cm
seat height 49 cm
length of fabric 6 m



cottage

Beechwood feet. Fully upholstered.
w: 77 cm x d: 72 cm x h: 85 cm
seat height 38 cm
length of fabric 3 m



dallas

Beechwood base. Fully upholstered.
w: 70 cm x d: 85 cm x h: 105 cm
seat height 49 cm
length of fabric 5,5 m



pouf dallas



danville

Beechwood base. Fully upholstered.
w: 60 cm x d: 60 cm x h: 60 cm
seat height 39 cm
length of fabric 2 m



dartmouth

Beechwood base. Fully upholstered.
Exist in sofa. w: 58 cm x d: 68 cm x h: 75 cm
seat height 37 cm
length of fabric 3 m



edison swivel

N edison

Maple feet. Fully upholstered or with slipcover.
Available with swivel. Option nails (see p.73).
w: 79 cm x d: 86 cm x h: 86 cm
seat height 43 cm
length of fabric 6 m



pouf el paso

el paso

Oak base. Upholstered with nails (see p.73).
w: 73 cm x d: 85 cm x h: 115 cm
seat height 46 cm
length of fabric 5 m



fayetteville

Fully upholstered. Available with swivel.
Exist in sofa. w: 71 cm x d: 99 cm x h: 84 cm
seat height 46 cm
length of fabric 7,5 m



flint

Beechwood base. Fully upholstered.
Exist in sofa. w: 61 cm x d: 75 cm x h: 80 cm
seat height 40 cm
length of fabric 4 m

gwinnett 

Upholstered with slipcover. Exist in sofa.
w: 84 cm x d: 92 cm x h: 86 cm
seat height 46 cm
length of fabric 9 m



franklin 

Upholstered with slipcover. Available with swivel.
w: 69 cm x d: 84 cm x h: 84 cm
seat height 43 cm
length of fabric 6,5 m



georgia

Beechwood base. Fully upholstered.
Exist in sofa. w: 90 cm x d: 86 cm x h: 83 cm
seat height 44 cm
length of fabric 6 m



halifax

Beechwood feet. Fully upholstered.
Feet: Burton, Daly, Mitchell, Murray (see p.72).
w: 80 cm x d: 80 cm x h: 100 cm
seat height 47 cm
length of fabric 5 m



home

Beechwood feet. Fully upholstered.
 Feet: Hunter, Victoria (see p.72).
 w: 76 cm x d: 75 cm x h: 80 cm
 seat height 39 cm
 length of fabric 3 m



home with buttons

Beechwood feet. Fully upholstered
 with buttons. Feet: Hunter, Victoria (see p.72).
 w: 76 cm x d: 75 cm x h: 80 cm
 seat height 39 cm
 length of fabric 4 m



houston

Beechwood feet. Fully upholstered with nails (see p.72).
 w: 80 cm x d: 85 cm x h: 114 cm
 seat height 47 cm
 length of fabric 5,5 m

pouf houston



idaho

Beechwood feet. Fully upholstered.
 Feet: Archer, Mitchell (see p.72).
 w: 75 cm x d: 85 cm x h: 88 cm
 seat height 46 cm
 length of fabric 5 m



jersey

Beechwood feet. Fully upholstered.
 w: 70 cm x d: 70 cm x h: 76 cm
 seat height 39 cm
 length of fabric 3 m



N joplin

Beechwood feet. Fully upholstered.
 w: 66 cm x d: 84 cm x h: 84 cm
 seat height 47 cm
 length of fabric 4,5 m



key west

Beechwood feet. Fully upholstered. Exist in sofa.
 w: 79 cm x d: 81 cm x h: 75 cm
 seat height 41 cm
 length of fabric 5,5 m



lancaster



Maple feet. Fully upholstered or with slipcover.
 Exist in sofa. w: 92 cm x d: 112 cm x h: 87 cm
 seat height 46 cm
 back cushion 50x50 cm
 length of fabric 10 m



N lawrence



Fully upholstered or with slipcover. Available with swivel.
 Exist in sofa. w: 76 cm x d: 91 cm x h: 84 cm
 seat height 46 cm
 length of fabric 7 m



special edition "jackson crazy":
sunshine, green and classic (see pricelist)

jackson

Beechwood feet. Fully upholstered.
Only available in a limited selection of fabrics (see pricelist).
w: 70 cm x d: 92 cm x h: 113 cm
seat height 44 cm
length of fabric 6 m



judd

Beechwood feet. Fully upholstered.
Exist in sofa. w: 55 cm x d: 70 cm x h: 75 cm
seat height 41 cm
length of fabric 2,5 m



lenox

Beechwood feet. Fully upholstered.
Options nails (see p.72).
w: 75 cm x d: 80 cm x h: 103 cm
seat height 43 cm
length of fabric 4 m





liberty



Fully upholstered or with slipcover. Available with swivel.
Exist in sofa. w: 76 cm x d: 91 cm x h: 84 cm

seat height 46 cm
length of fabric 8 m



louisburg



Upholstered with slipcover. Available with swivel.
Exist in sofa. w: 89 cm x d: 97 cm x h: 91 cm

seat height 43 cm
length of fabric 8 m



modesto

Beechwood feet. Fully upholstered.
w: 52 cm x d: 60 cm x h: 67 cm

seat height 39 cm
length of fabric 1,5 m



matthews



Maple feet. Fully upholstered with nails
(see p.73). Available with skirt. Exist in sofa.
w: 84 cm x d: 107 cm x h: 99 cm

seat height 46 cm
length of fabric 7,5 m
fabric with skirt 8,5 m





N monroe

Maple feet. Fully upholstered with nails (see p.73) or with slipcover.
w: 69 cm x d: 86 cm x h: 84 cm
seat height 46 cm
length of fabric 5 m
slipcover 6 m



mooreville

Upholstered with slipcover.
w: 88 cm x d: 93 cm x h: 91 cm
seat height 50 cm
length of fabric 5 m



nashville

Beechwood feet. Fully upholstered.
w: 76 cm x d: 78 cm x h: 70 cm
seat height 42 cm
length of fabric 6 m



oklahoma with buttons

Beechwood feet. Fully upholstered with buttons. w: 74 cm x d: 85 cm x h: 86 cm
seat height 48 cm
length of fabric 5,5 m



norfolk

Fully upholstered.
w: 85 cm x d: 95 cm x h: 87 cm
seat height 43 cm
length of fabric 8,5 m



norwood

Upholstered with slipcover. Available with swivel or gliders. w: 81 cm x d: 86 cm x h: 104 cm
seat height 46 cm
length of fabric 7 m



oklahoma

Beechwood feet. Fully upholstered.
w: 74 cm x d: 85 cm x h: 86 cm
seat height 48 cm
length of fabric 5 m



oldson

American walnut frame and base.
Leather colors: dark brown, white, cognac.
w: 55 cm x d: 58 cm x h: 79 cm
seat height 44 cm



pierson

Oak frame with nails (see p.73). Fully upholstered.
w: 46 cm x d: 54 cm x h: 64 cm
seat height 38 cm
length of fabric 1 m



pittsburgh

Beechwood feet. Fully upholstered.
w: 85 cm x d: 82 cm x h: 114 cm
seat height 46 cm
length of fabric 5 m



pittsburgh slipcover

Upholstered with slipcover.
w: 85 cm x d: 82 cm x h: 114 cm
seat height 46 cm
length of fabric 5,5 m



plymouth with buttons

Beechwood feet. Fully upholstered with buttons and nails (see p.72).
w: 78 cm x d: 95 cm x h: 106 cm
seat height 51 cm
length of fabric 6 m



reno

Beechwood base. Fully upholstered.
w: 85 cm x d: 90 cm x h: 83 cm
seat height 47 cm
length of fabric 6,5 m



sacramento

Oak frame and base. Fully upholstered.
w: 67 cm x d: 102 cm x h: 95 cm
seat height 41 cm
length of fabric 4 m



pouf caramel



stanley



Maple feet. Fully upholstered with nails (see p.73). w: 74 cm x d: 86 cm x h: 81 cm
seat height 46 cm
length of fabric 5 m



san diego

Beechwood base. Fully upholstered with nails (see p.72). w: 85 cm x d: 88 cm x h: 115 cm
seat height 51 cm
length of fabric 6 m



pouf san diego





wendell relax 

Maple feet. Fully upholstered.
 w: 84 cm x d: 94 cm x h: 94 cm
 seat height 46 cm
 length of fabric 6,5 m



westfield 

Maple feet. Fully upholstered or with slipcover.
 Available with swivel or gliders. Exist in sofa.
 w: 89 cm x d: 89 cm x h: 94 cm
 seat height 46 cm
 length of fabric 7 m



whiteville 

Maple feet. Fully upholstered.
 w: 59 cm x d: 69 cm x h: 84 cm
 seat height 41 cm
 length of fabric 4 m



winston 

Oak base. Fully upholstered or with slipcover.
 w: 69 cm x d: 89 cm x h: 92 cm
 seat height 48 cm
 length of fabric 6 m

 pinehurst

Oak base. Fully upholstered.
 w: 76 cm x d: 86 cm x h: 109 cm
 seat height 48 cm
 length of fabric 7 m

OVERVIEW

THE ARMCHAIRS



alabama



anderson



anniston



N anniston swivel



N appleton



asheboro



atlanta



atlanta with buttons



augusta



baby blues



boonville



brazil



brentwood



bruce



carmel



chelsea



chelsea with buttons



clayton



N clinton



colby



columbus



concord



copperfield



cottage



dallas



danville



dartmouth



N edison



el paso



fayetteville



flint



franklin



georgia



N gwinnett



halifax



home



home with buttons



houston



idaho



jackson



jersey



N joplin



judd



key west



lancaster



N lawrence



lenox



liberty



N louisburg



matthews



N modesto



N monroe



mooreville



nashville



norfolk



norwood



oklahoma



oklahoma with buttons



oldson



pierson



N pinehurst



pittsburgh



pittsburgh slipcover



plymouth with buttons



reno



sacramento



san diego



stanley



wendell relax



westfield



whiteville



winston

THE CHAIRS

**CLASSIC, FUNCTIONAL,
AND COMFORTABLE**

The range offers a benchmark range of choices with which the most beautiful homes, restaurants and hotels are created in many different countries.



MORE INFO ON
WWW.MARIESCORNER.COM



belmont

Oak or American walnut frame and base.
Fully upholstered.

w: 55 cm x d: 56 cm x h: 86 cm
length of fabric 1 m



armstrong

Beechwood frame and base. Fully upholstered.

w: 42 cm x d: 50 cm x h: 85 cm
length of fabric 0,5 m





boston

Beechwood feet. Fully upholstered.
w: 63 cm x d: 60 cm x h: 79 cm
length of fabric 2 m



brunswick

Beechwood base. Fully upholstered.
w: 55 cm x d: 55 cm x h: 98 cm
length of fabric 2,5 m



burlington

Upholstered with slipcover.
w: 57 cm x d: 65 cm x h: 90 cm
length of fabric 4 m



carson

Oak frame and base.
Fully upholstered.
w: 50 cm x d: 56 cm x h: 86 cm
length of fabric 1 m



cambridge-c

Beechwood feet. Fully upholstered.
w: 50 cm x d: 55 cm x h: 93 cm
length of fabric 1,5 m



cambridge-f

Beechwood feet. Fully upholstered.
w: 61 cm x d: 57 cm x h: 93 cm
length of fabric 2 m



cleveland

Beechwood feet. Fully upholstered.
w: 51 cm x d: 58 cm x h: 81 cm
length of fabric 2 m



columbia

Beechwood feet. Fully upholstered.
w: 51 cm x d: 58 cm x h: 100 cm
length of fabric 2,5 m



dayton

Beechwood feet. Fully upholstered.
w: 63 cm x d: 66 cm x h: 80 cm
length of fabric 2,5 m



denver

Beechwood feet. Fully upholstered.
w: 51 cm x d: 60 cm x h: 85 cm
length of fabric 2,5 m



duke

Beechwood feet. Fully upholstered.
w: 51 cm x d: 57 cm x h: 83 cm
length of fabric 1,5 m



eaton-c

Beechwood feet. Fully upholstered.
Available with slipcover.
w: 53 cm x d: 63 cm x h: 102 cm
length of fabric 1,5 m



eaton-f

Beechwood feet. Fully upholstered.
Available with slipcover.
w: 62 cm x d: 67 cm x h: 102 cm
length of fabric 2 m



eaton-f with buttons

Beechwood feet.
Fully upholstered with buttons.
w: 62 cm x d: 67 cm x h: 102 cm
length of fabric 2,5 m



eaton-c with buttons

Beechwood feet.
Fully upholstered with buttons.
w: 53 cm x d: 63 cm x h: 102 cm
length of fabric 2 m



green

Beechwood feet. Fully upholstered.
w: 48 cm x d: 58 cm x h: 95 cm
length of fabric 1,5 m



jack-c

Beechwood feet. Fully upholstered.
Only available in a limited selection of fabrics
(see pricelist).
w: 56 cm x d: 55 cm x h: 95 cm
length of fabric 2,2 m



jack-f

Beechwood feet. Fully upholstered.
Only available in a limited selection of fabrics
(see pricelist).
w: 61 cm x d: 75 cm x h: 100 cm
length of fabric 2,5 m



harvard-f

Beechwood feet.
Fully upholstered or with slipcover.
w: 62 cm x d: 65 cm x h: 91 cm
length of fabric 2 m



harvard-c

Beechwood feet.
Fully upholstered or with slipcover.
w: 49 cm x d: 53 cm x h: 91 cm
length of fabric 1,5 m



malcolm-c

Beechwood feet. Fully upholstered.
w: 49 cm x d: 51 cm x h: 91 cm
length of fabric 1,2 m



manchester-c

Beechwood feet. Fully upholstered.
w: 51 cm x d: 62 cm x h: 85 cm
length of fabric 1,5 m
(1,25m +0,25 piping)



manchester-f

Beechwood feet. Fully upholstered.
w: 56 cm x d: 62 cm x h: 85 cm
length of fabric 1,5 m
(1,25m +0,25 piping)



mansfield-f

Beechwood base. Fully upholstered.
w: 58 cm x d: 60 cm x h: 82 cm
length of fabric 2 m



mansfield-c

Beechwood base. Fully upholstered.
w: 49 cm x d: 56 cm x h: 80 cm
length of fabric 1,5 m



monterey

Beechwood feet. Fully upholstered.
Only available in a limited selection of fabrics
(see price list).
w: 50 cm x d: 61 cm x h: 86 cm
length of fabric 1,5 m



raleigh

Upholstered with slipcover on casters.
w: 60 cm x d: 72 cm x h: 107 cm
length of fabric 6 m



raleigh with cushions

Upholstered with slipcover on casters.
w: 60 cm x d: 72 cm x h: 107 cm
length of fabric 6,5 m



wilson-f

wilson-c

Upholstered with slipcover on casters.
Available with arms (wilson-f).
w: 56 cm x d: 63,5 cm x h: 84 cm
length of fabric 3 m



stanford-c

Beechwood feet.
Fully upholstered or with slipcover.
w: 47 cm x d: 52 cm x h: 81 cm
length of fabric 1,5 m



stanford-f

Beechwood feet.
Fully upholstered or with slipcover.
w: 60 cm x d: 62 cm x h: 81 cm
length of fabric 2 m



wilson-b

Upholstered with slipcover.
w: 152 cm x d: 63,5 cm x h: 84 cm
length of fabric 6,5 m



bridgeport

Beechwood feet. Fully upholstered.

w: 52 cm x d: 50 cm		
seat	high chair	barchair
height	102 cm	112 cm
seat height	70 cm	80 cm
length of fabric	2 m	2 m



charlotte

Beechwood feet. Fully upholstered.

w: 52 cm x d: 49 cm		
seat	high chair	barchair
height	95 cm	105 cm
seat height	70 cm	80 cm
length of fabric	2 m	2 m



fillmore

Oak frame and base. Fully upholstered.

w: 45 cm x d: 50 cm		
seat	high chair	barchair
height	90 cm	100 cm
seat height	70 cm	80 cm
length of fabric	0,6 m	0,6 m



manchester-t

Beechwood feet. Fully upholstered.

w: 52 cm x d: 60 cm		
seat	high chair	barchair
height	101 cm	110 cm
seat height	70 cm	80 cm
length of fabric	1,5 m	1,5 m
(1,25m +0,25 piping)		



texas

Beechwood feet. Fully upholstered.

w: 48 cm x d: 46 cm		
seat	high chair	barchair
height	95 cm	105 cm
seat height	70 cm	80 cm
length of fabric	1,2 m	1,2 m

denver-t

Beechwood feet. Fully upholstered.

w: 50 cm x d: 51 cm		
height	105 cm	
seat height	70 cm	
length of fabric	2,5 m	



texas-2

Beechwood feet. Fully upholstered.

w: 100 cm x d: 46 cm		
height	95 cm	
seat height	70 cm	
length of fabric	2 m	

OVERVIEW

THE CHAIRS



armstrong



belmont



boston



brunswick



burlington



cambridge-c



cambridge-f



carson



cleveland



columbia



dayton



denver



duke



eaton-c



eaton-f



eaton-c with buttons



eaton-f with buttons



green



harvard-c



harvard-f



jack-c



jack-f



malcolm-c



manchester-c



manchester-f



mansfield-c



mansfield-f



monterey



raleigh



raleigh with cushion



stanford-c



stanford-f



wilson-b



wilson-c



wilson-f



bridgeport



charlotte



denver



fillmore



manchester-t



texas



texas-2

THE POUFS

**MULTIPLE CHOICE,
INFINITE COMBINATIONS...**

These are the origin of the brand's success and come in an unrivalled number of models, offering the user the largest possible choice. They can be combined at will with the brand's other functions and models.



MORE INFO ON
WWW.MARIESCORNER.COM



austin

Beechwood base. Fully upholstered.

d: 54 cm x seat h: 42 cm x arm h: 65 cm
pouf medium large
width 150 cm 170 cm
length of fabric 4,5 m 5m



collin

Beechwood base.
Fully upholstered with foam.

diam: 40 cm x h: 40 cm
length of fabric: 1 m

collin large

Beechwood base.
Fully upholstered with foam.

diam: 60 cm x h: 36 cm
length of fabric: 1,5 m



collin extra large

Beechwood base.
Fully upholstered with foam.

diam: 80 cm x h: 30 cm
length of fabric: 1,5 m





bag



Upholstered with slipcover.
w: 60 cm x d: 60 cm x h: 45 cm
length of fabric: 3 m



bandana

Beechwood feet. Fully upholstered or with slipcover.

h: 48 cm						
pouf	small	small	small	medium	medium	large
width	40 cm	50 cm	60 cm	90 cm	100 cm	150 cm
depth	40 cm	50 cm	40 cm	40 cm	40 cm	50 cm
length of fabric	0,8 m	0,9 m	1 m	1,3 m	1,4 m	1,9 m
slipcover	1 m	1,1 m	1,2 m	1,5 m	1,6 m	2,1 m



brad

Beechwood feet. Fully upholstered.

h: 42 cm		
pouf	medium	large
width	95 cm	95 cm
depth	60 cm	95 cm
length of fabric	2,5 m	3,5 m



brazil

Aluminium feet. Fully upholstered with buttons.

w: 56 cm x d: 53 cm x h: 38 cm
length of fabric: 1,5 m



california

Oak base. Fully upholstered. Available until end of stock.

w: 110 cm x d: 110 cm x h: 37 cm
length of fabric: 2 m



carmel

Oak base. Fully upholstered.
w: 68 cm x d: 48 cm x h: 40 cm
length of fabric: 1 m



copperfield

Beechwood feet. Fully upholstered. Feet: Burton, Daly, Murray (see p.72).

w: 60 cm x d: 60 cm x h: 52 cm
length of fabric: 3 m



cube

Beechwood feet. Fully upholstered.
w: 40 cm x d: 40 cm x h: 40 cm
length of fabric: 1 m



dallas

Beechwood base. Fully upholstered.
w: 68 cm x d: 45 cm x h: 45 cm
length of fabric: 2 m



el paso large



Oak base. Fully upholstered.
w: 73 cm x d: 45 cm x h: 56 cm
length of fabric: 2,2 m



erwin round

Fully upholstered with buttons.
Available on casters.

h: 36 cm			
pouf	round1	round2	round3
diam	69 cm	94 cm	122 cm
length of fabric	2 m	4 m	5 m



erwin oval

Fully upholstered with buttons.
Available on casters.

h: 36 cm		
pouf	oval1	oval2
width	115 cm	150 cm
depth	76 cm	76 cm
length of fabric	3 m	4 m



footstool

Beechwood feet. Fully upholstered. Feet: Burton, Daly, Hunter, Mitchell, Murray, Victoria (see p.72).

h: 38 cm									
pouf	small	small	small	medium	medium	medium	large	large	large
width	40 cm	50 cm	60 cm	90 cm	100 cm	80 cm	100 cm	120 cm	150 cm
depth	40 cm	50 cm	40 cm	50 cm	60 cm	80 cm	100 cm	70 cm	50 cm
length of fabric	0,8 m	0,9 m	1 m	1,3 m	1,4 m	1,2 m	1,4 m	1,6 m	1,9 m



footstool with buttons

Beechwood feet. Fully upholstered. Feet: Burton, Daly, Hunter, Mitchell, Murray, Victoria (see p.72).

h: 38 cm									
pouf	small	small	small	medium	medium	medium	large	large	
width	40 cm	50 cm	60 cm	90 cm	100 cm	80 cm	120 cm	150 cm	
depth	40 cm	50 cm	40 cm	50 cm	60 cm	80 cm	70 cm	50 cm	
length of fabric	0,8 m	1 m	1,2 m	1,8 m	2 m	1,6 m	2,4 m	3 m	



georgia

Beechwood base. Fully upholstered.

h: 39 cm								
pouf	50/50	60/40	95/95	100/60	115/115	130/100		
width	50cm	60cm	95cm	100cm	115cm	130cm		
depth	50cm	40cm	95cm	60cm	115cm	100cm		
length of fabric	2 m	2 m	3 m	2,5 m	3,5 m	3,5 m		



judd

Beechwood base. Fully upholstered.
w: 55 cm x d: 55 cm x h: 40 cm
length of fabric: 1,4 m



judd cube

Beechwood base. Fully upholstered.
w: 40 cm x d: 40 cm x h: 40 cm
length of fabric: 1 m



jazz

Beechwood feet. Fully upholstered.
h: 46 cm

pouf	75/40	75/60	75/75	80/40	80/60	120/60
width	75cm	75cm	75cm	80cm	80cm	120cm
depth	40cm	60cm	75cm	40cm	60cm	60cm
length of fabric	2,1 m	2,5 m	3 m	2,4 m	2,8 m	3 m



N lancaster 

Maple feet.
Fully upholstered or with slipcover.
w: 79 cm x d: 64 cm x h: 43 cm
length of fabric: 4 m



houston

Beechwood feet. Fully upholstered.
w: 73 cm x d: 45 cm x h: 45 cm
length of fabric: 2 m



lenox

Beechwood feet. Fully upholstered.
w: 64 cm x d: 40 cm x h: 41 cm
length of fabric: 1 m



loft

Beechwood feet. Fully upholstered.

h: 38 cm

pouf	small	small	small	medium	medium	medium	large	large	large
width	40 cm	50 cm	60 cm	90 cm	100 cm	80 cm	100 cm	120 cm	150 cm
depth	40 cm	50 cm	40 cm	50 cm	60 cm	80 cm	100 cm	70 cm	50 cm
length of fabric	1,5 m	1,5 m	1,5 m	2,5 m	2,5 m	2,5 m	3 m	3 m	3 m



N liberty 

Fully upholstered or with slipcover.
w: 69 cm x d: 53 cm x h: 41 cm
length of fabric: 4 m

linwood 

Upholstered with slipcover.
w: 152 cm x d: 76 cm x h: 45 cm
length of fabric: 5,5 m





loft with buttons

Beechwood feet. Fully upholstered with buttons and nails (see p.72).

h: 38 cm									
pouf	small	small	small	medium	medium	medium	large	large	large
width	40 cm	50 cm	60 cm	90 cm	100 cm	80 cm	100 cm	120 cm	150 cm
depth	40 cm	50 cm	40 cm	50 cm	60 cm	80 cm	100 cm	70 cm	50 cm
length of fabric	1,8 m	1,8 m	1,8 m	3 m	3 m	3 m	4 m	4 m	4 m



rodin

Beechwood feet. Fully upholstered.

Feet: Burton, Daly, Hunter, Mitchell, Murray, Victoria

d: 55 cm x h: 57 cm		
pouf	110 cm	130 cm
length of fabric	2 m	2,5 m



marius

Beechwood feet. Fully upholstered.

h: 38 cm			
pouf	40/40	65/65	130/65
width	40 cm	65 cm	130 cm
depth	40 cm	65 cm	65 cm
length of fabric	1,2 m	1,8 m	2 m



mooreville

Upholstered with slipcover.

w: 77 cm x d: 55 cm x h: 45 cm
length of fabric: 3 m



san diego

Beechwood base. Fully upholstered and nails (see p.72). Exist in armchair.

w: 60 cm x d: 42 cm x h: 45 cm
length of fabric: 2,5 m



stockton

Beechwood feet. Fully upholstered. Feet: Burton, Daly, Hunter, Mitchell, Murray, Victoria (see p.72).

h: 38 cm									
pouf	small	small	small	medium	medium	medium	large	large	large
width	40 cm	50 cm	60 cm	90 cm	100 cm	80 cm	100 cm	120 cm	150 cm
depth	40 cm	50 cm	40 cm	50 cm	60 cm	80 cm	100 cm	70 cm	50 cm
length of fabric	1 m	1,1 m	1,2 m	1,5 m	1,6 m	1,4 m	1,6 m	1,8 m	2,1 m



stockton with buttons

Beechwood feet. Fully upholstered with buttons. Feet: Burton, Daly, Hunter, Mitchell, Murray, Victoria (see p.72).

h: 38 cm									
pouf	small	small	small	medium	medium	medium	large	large	large
width	40 cm	50 cm	60 cm	90 cm	100 cm	80 cm	100 cm	120 cm	150 cm
depth	40 cm	50 cm	40 cm	50 cm	60 cm	80 cm	100 cm	70 cm	50 cm
length of fabric	1 m	1,1 m	1,2 m	1,8 m	2 m	1,6 m	2 m	2,4 m	3 m





table cube

Beechwood feet. Fully upholstered.

h: 40 cm

pouf	70/35	70/70	105/35	105/70	105/105	140/35	140/70
width	70 cm	70 cm	105 cm	105 cm	105 cm	140 cm	140 cm
depth	35 cm	70 cm	35 cm	70 cm	105 cm	35 cm	70 cm
length of fabric	1,6 m	1,9 m	1,9 m	2,9 m	3,3 m	2,4 m	3,5 m



santa fe

Oak frame. Cow or leather seating.
(till end of stock)
w: 50 cm x d: 40 cm x h: 42 cm



N tryon 

Oak frame and base on casters.
Fully upholstered.
w: 175 cm x d: 53 cm x h: 46 cm
length of fabric: 3 m



waco

Beechwood feet. Fully upholstered.
w: 40 cm x d: 40 cm x h: 56 cm x seat h: 40 cm
length of fabric: 1 m



toledo

Beechwood feet. Fully upholstered.
w: 30/40 cm x d: 40 cm x h: 40 cm
length of fabric: 1 m

OVERVIEW

THE POUFS



austin



bag



bandana



brad



brazil



california



carmel



collin



collin large



collin extra large



copperfield



cube



dallas



el paso large



N erwin round



erwin oval



footstool



footstool with buttons



georgia



houston



jazz



judd



judd cube



lancaster



lenox



liberty



linwood



loft



loft with buttons



marius



mooresville



rodin



san diego



santa fe



stockton



stockton with buttons



table cube



toledo



tryon



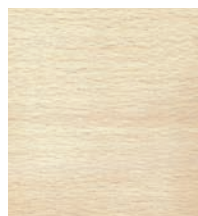
waco

FINISHING

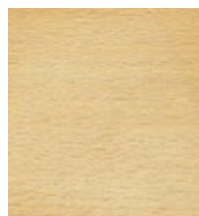
MARIE'S CORNER

You can choose the colour of the wood finish, studs and, if appropriate, the base of each model so that your furniture can be integrated perfectly to suit the feel of your own interior design...

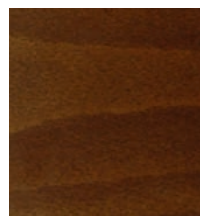
WOOD SEATS 1 Collection



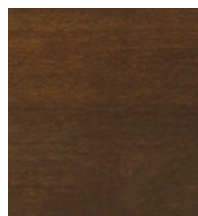
Color
Beech rough - 1



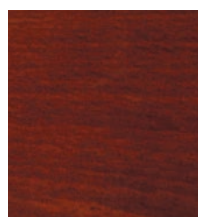
Color
Beech natural - 2



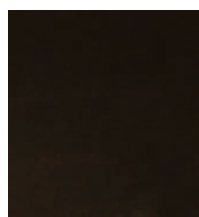
Color
Beech walnut - 5



Color
Beech waxed walnut - 6



Color
Beech mahogany - 7



Color
Beech ebony - 9

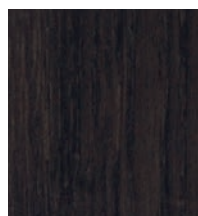


Color
Beech anthracite - 12



Color
Beech soft grey - 13

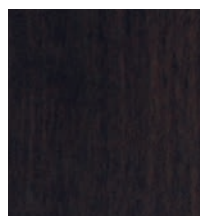
WOOD SEATS 2 Collection



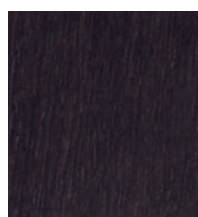
Color
Oak anthracite - 1



Color
Oak ebony - 2



Color
American walnut naturel
(only available for the
chairs Belmont, Carson
and Fillmore)

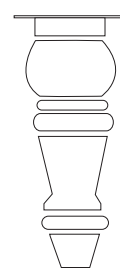


Color
Oak chestnut - 3



Color
Oak naturel - 4

LEGS Collection



Archer



Burton



Daly



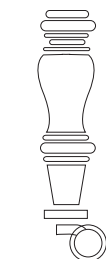
Hunter



Mitchell

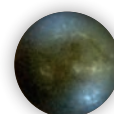


Victoria

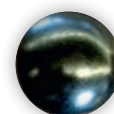


Murray

NAILS Collection



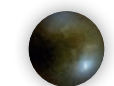
bronze 14 mm



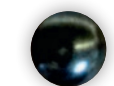
gun-metal 14 mm



silver 14 mm



bronze 10 mm



gun-metal 10 mm



silver 10 mm

AMERICAN ECO-FRIENDLY



This new family of seats and accessories is developed by Marie's Corner in the United States. With their eco-friendly spirit.

MAPLE WOOD Collection



weathered grey for standard maple frames

fruitwood

black or wax walnut standard finish



ebony

charcoal on maple

smoke on maple

OAK WOOD Collection

Available for model pierson and winston



weathered grey for oak standard frames

charcoal on oak

smoke on oak

NAILS Collection



natural

nickel

pewter

platinum

small hammered gunmetal

STITCHINGS



topstitching standard

mini flange

french seam (with supplement)

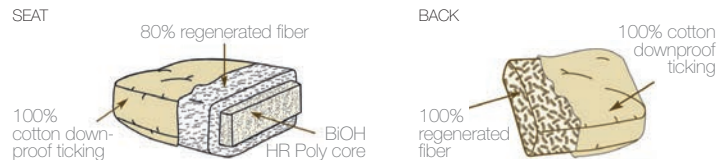
zig zag stitch

Available in 7 contrasting thread colors

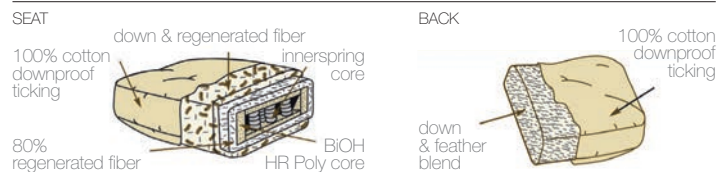
All stitchings are also available on 3 thread weights: Cablestitch, Jumbo Topstitch and Regular Topstitch.

Cushions

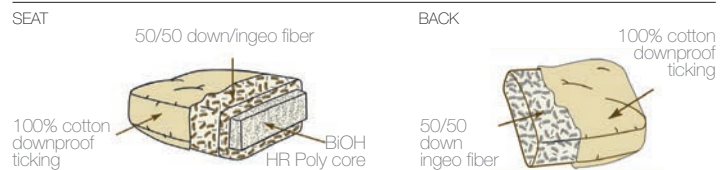
Natural package (standard)



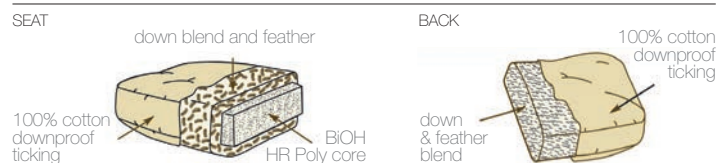
Cloud nine package



Eco-lux package



Haven package



THE FABRICS

**A RANGE OF OVER
500 QUALITY FINISHES
TO CHOOSE FROM...**

The collections come in three families: 'Classic', 'American' and the extremely popular 'I catch'.

Together they represent a selection of over 500 different fabrics that can be combined as the customer wishes for curtains, cushions, wall coverings and for the upholstery of our collection of chairs and sofas.

We also offer exclusive finishes in leather and skin.



MARIE'S CORNER
FABRIC
SHOP

ALL OUR FABRICS
CAN BE ORDERED
APART BY METER!



MORE INFO ON
WWW.MARIESCORNER.COM

CLASSIC COLLECTION

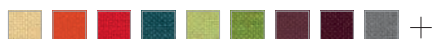
This collection comes in 22 different fabric qualities based on natural materials.

Here, you'll find mainly classic finishes such as cottons, velvets, linens and others, available in a variety of colours.



Allen

100% LI
MT: 31 000



Available in 38 tones

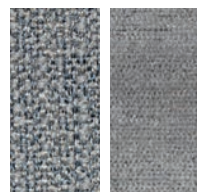


Dalton

33% CO - 8% LI - 38% PAN - 21% PES
MT: 40 000



Available in 9 tones



Bacon

Bacon: 41%VI-39%PL-10%LI-8%CO-2%PC
MT: 25 000



5 tones

Brady: 53%VI-16%CO-9%PL-11%PA-7%LI-4%PC
MT: 18 000



5 tones



Dobson

Dobson: 100% LI
MT: 18 000

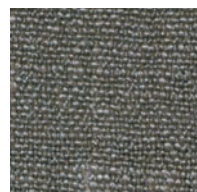


10 tones

Porter: 76% VI, 24% LI
MT: 25 000



5 tones



Bess

71%LI 21%CO 8%PA
MT: 45 000



17 tones



Field N

100% CO
MT: 25 000



18 tones



Beuys

Beuys: 100% LI
MT: 25 000



14 tones

Bundy: 100% LI
MT: 25 000



6 tones



Fontana

70%VI, 30%LI
MT: 25 000



12 tones

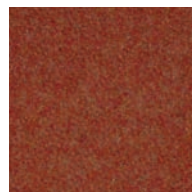


Burden

100% LI
MT: 20 000



38 tones

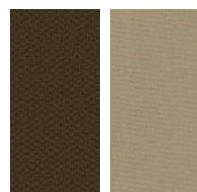


Hopper

70% WO, 25% PAL, 5% OF
MT: 40 000



22 tones



Cameron

Cameron: 100% CO
MT: 40 000



20 tones

Catlin: 100% CO
MT: 25 000



20 tones

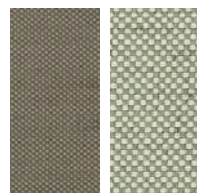


Horizon

Allston | Americum | Carbon | Elmer | Titane
MT: 50 000 | 40 000 | 15 000 | 50 000 | 50 000



tones: 5 | 11 | 4 | 4 | 4



Clark

Clark: 56% LI, 44% CO
MT: 30 000



20 tones

Coburn: 52% LI, 48% CO
MT: 32 000



20 tones



Lawson N

Lawson: 34%CO, 30%VI, 24%LI, 7%BAMB, 5%PA
MT: 45 000



5 tones

Laurence: 34%CO 30%VI, 24%LI, 7%BAMB, 5%PA
MT: 45 000



5 tones

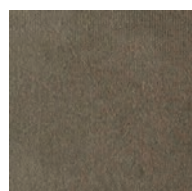


Curtis

70% VI - 30% LI
MT: 25 000



18 tones



Milo (velvet)

100% CO
MT: 65 000



18 tones

Mineral N

Agate: 55%CO, 45%LI
MT: 25 000

Calcite: 100%LI
MT: 20 000

Available in 4 tones

6 tones

Californite: 48%VI, 25%CO, 15%LI, 12%PL
MT: 20 000

Copal: 40%CO 30%VI, 15%LI, 15%PL
MT: 25 000

3 tones

3 tones

Diamond: 40%CO, 25%PL, 15%PC, 10%WO, 10%VI
MT: 30 000

Dolomite: 70%LI, 30%CO
MT: 20 000

5 tones

Iron: 50%CO 50%VI
MT: 20 000

Quartz: 45%PC, 30%WO, 25%PL
MT: 30 000

3 tones

3 tones

Samaras N

100%PS
MT: 35 000

13 tones

Shaw

Shaw 1 & 2: 63% CO, 37% LI
MT: 30 000

Available in 89 tones

Viola

70% PO, 15%PA, 15%CO
MT: 60 000

19 tones

Weston

Weston: 35%WO, 24%LI, 24%PES, 17%PC
MT: 60 000

Winters: MT: 40 000

Willy: 65%LI, 25%WO, 10%NY
MT: 40 000

11 tones

7 tones

4 tones

Wong (velvet) N

17%CO, 83%PS
MT: 20 000

30 tones

ICATCH COLLECTION

This collection is also based on natural materials. It offers more fashionable finishes in a much smaller selection of colours. The range is revised and adapted every year to closely reflect current styles and fashions.

Adams

37%WO, 22%LI, 20%CO, 14%PA, 7%BA
MT: 100 000

Blake

44% LI, 22% CO, 20% PAN, 5% BAMB
MT: 45 000

Blunt

60%LI, 24%CO, 6%VI, 6%PL, 3%WO, 1%PO
MT: 45 000

Bubley

28% CO, 38% LI, 28% PAN, 6% PES
MT: 20 000

Chandler

72%CO, 28%LI
MT: 31 000

Davies

32%LI, 25%WO, 21%CO, 13%PA, 9%BA
MT: 100 000



Douglas **N**

34%CO, 30%VI, 24%LI, 7%BAMB, 5%PA
MT: 45 000



Dove **N**

34%CO, 30%VI, 24%LI, 7%BAMB, 5%PA
MT: 45 000



Doyle **N**

46%CO, 24%LI, 6%BAMB, 10%PAN, 2%PES, 12%PA
MT: 40 000



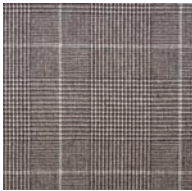
Evans

72%CO, 28%LI
MT: 31 000



Halley **N**

53%VI, 21%PL, 13%CO, 10%LI, 2%PC, 1%OF
MT: 18 000



Harnett

80%WO, 20%PES
MT: 38 000



Hicks (Reversible)

40% LI, 24% CO, 8% BA, 16% PAN, 7%
MT: 16 000



Homer **N**

55%VI, 35%CO, 10%LI
MT: 18 000



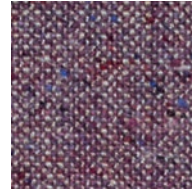
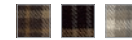
Horn **N**

41%VI, 29%PL, 15%CO, 10%LI, 4%PC, 1%OF
MT: 15 000



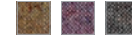
Javris **N**

100%LI
MT: 20 000



Jones

37% WO, 22% LI, 20% CO, 14% PA, 7% BA
MT: 100 000



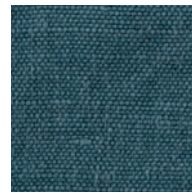
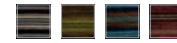
Mac Dean (Reversible: Lined / Squared)

20% PES, 80% WO
MT: 20 000



Mayne

33% CO, 4% LI, 7% PA, 28% PAN, 10%
MT: 40 000



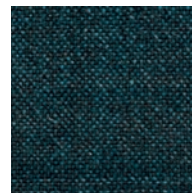
Morgan **N**

100%LI
MT: 20 000



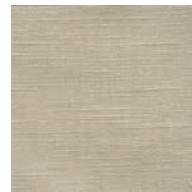
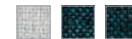
Nash

43% LI, 34% CO, 13% BB, 10% NY
MT: 40 000



Neel **N**

42%LI, 26%PAN, 20%CO, 4%PA, 3%WO, 2%VI
MT: 45 000



Peale

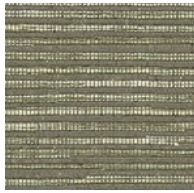
32% LI, 24% CO, 31% PAN, 13% PES
MT: 40 000



Reed

100 % LI
MT: 20 000





Rivers

12% PES, 53% VI, 35% LI
MT: 12 000



Sickert

60% LI, 29% PC, 10% CO, 1% PES
MT: 40 000



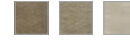
Roesen

70% VI, 30% LI
MT: 20 000



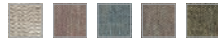
Simpson

40% LI, 24% CO, 8% BA, 16% PAN, 7%
MT: 16 000



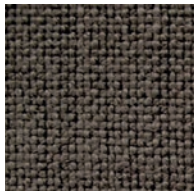
Russel

50% LI, 8% BA, 25% PAN, 11% PES, 6% NY
MT: 40 000



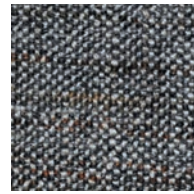
Sully

50%CO, 50%PES
MT: 50 000



Savery

73%LI,15%CO, 12%PA
MT: 45 000



Sloan

35%LI, 22%CO, 23%PAN, 8%BA, 6%PES, 6%PA
MT: 45 000

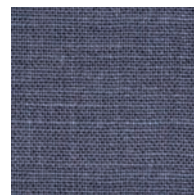
AMERICAN ECO FRIENDLY COLLECTION

Following the same principle of natural materials, this collection comes to us from the United States. It offers fabrics carefully selected and adds another touch to the classic range. This collection can be used for all models in catalog.



Abbey N

49%CO, 34%PS, 17%RAY



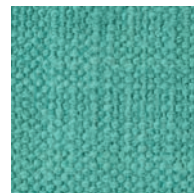
Berlin

100%LI



Austin N

100%PL



Burbank N

100%CO



Billy N

92%PL, 8%LI



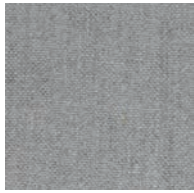
Cambridge

100%CO



Capri

100%LI



Dover

100%LI



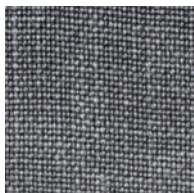
Duck

100%CO



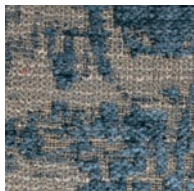
Glyn Linen

100%LI



Goldin

100%LI



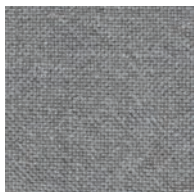
Jasper Indigo

15% CO, 15%PES, 62%RA, 5%POST, 3%PC



Jefferson

86%RA, 14%CO



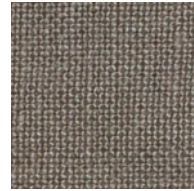
Kitts

100%LI



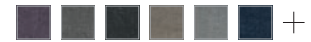
Laser

95%PES, 5%RA

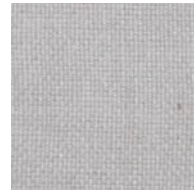


Lassaw

100% LI

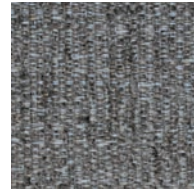


9 tones



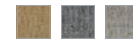
Lloyd

100% LI



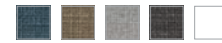
Providence

48%CO, 48%RA, 4%PES



Ruffin **N**

55%LI, 45%CO



Vision **N**

100%PL

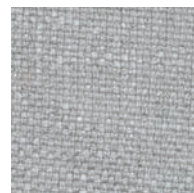


Walker

89%CO, 11%PES



15 tones



Wesley

57%VI, 28%LI, 15%CO



THE TABLES

TOP QUALITY & STYLISH LOOKS

Classic top-quality veneers in olive, oak, American walnut or solid smoked oak, the Marie's Corner range of tables looks stylish and takes its inspiration from various sources. Perfect for private or professional interiors.



MORE INFO ON
WWW.MARIESCORNER.COM



beja

Veneered American walnut.

table	side table
diam.	50 cm
height	56 cm



porto

Veneered oak or American walnut.

table	side table
diam.	50 cm
height	58,5 cm



omaha

Veneered American walnut or veneered olive LINEAIR.

table	coffee	coffee	dining	dining
width	120 cm	140 cm	220 cm	240 cm
depth	90 cm	100 cm	100 cm	105 cm
height	35 cm	35 cm	75 cm	75 cm



boowie

American oak smoked.

table	low	high
diam.	40 cm	40 cm
height	25 cm	30 cm



evora

Veneered American walnut.

table	side table
width	50 cm
depth	50 cm
height	60 cm



faro

Veneered oak or American walnut.

table	side table
diam.	65 cm
height	50 cm



osaka

Veneered olive wood table.

table	coffee*	coffee*	dining*	dining*	dining*	console*
width	160 cm	180 cm	150 cm	220 cm	240 cm	180 cm
depth	130 cm	120 cm	150 cm	100 cm	105 cm	50 cm
height	32 cm	32 cm	75 cm	75 cm	75 cm	75 cm

* Available until end of stock.



pebbles

American oak smoked.

table	small	medium	large
width	91 cm	122 cm	153 cm
depth	53 cm	65 cm	70 cm
height	25 cm	30 cm	25 cm



tanaka

Veneered oak*.

table	dining
width	90 cm
depth	90 cm
height	75 cm

* Available until end of stock.



tanega

Veneered olive LINEAIR wood.

table	side*	side*	dining*
width	60 cm	90 cm	90 cm
depth	60 cm	90 cm	90 cm
height	55 cm	68 cm	75 cm

* Available until end of stock.



springfield



American oak smoked.

table	dining	dining	dining	coffee	side	console	console	round table	bench	bench
width	180 cm	220 cm	240 cm	140 cm	60 cm	140 cm	170 cm	120 cm	180 cm	220 cm
depth	90 cm	100 cm	90 cm	90 cm	60 cm	40 cm	46 cm	120 cm	40 cm	40 cm
height	75 cm	75 cm	75 cm	35 cm	40 cm	75 cm	75 cm	75 cm	45 cm	45 cm



tukono

Veneered olive CIRCLE wood or oak.

table	side*	dining*
diam.	100 cm	110 cm
height	68 cm	75 cm

* Available until end of stock.



tukori

Veneered oak* or American walnut.

table	dining
diam.	110 cm
height	75 cm

* Available until end of stock.



tokyo

Veneered olive wood.

table	coffee*	coffee*
width	150 cm	170 cm
depth	70 cm	70 cm
height	34 cm	34 cm

* Available until end of stock.



FINISHING

TABLE WOOD



WOOD TABLES 1 Collection



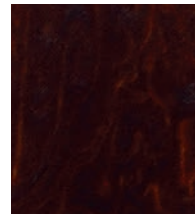
veneered olive
circle wood - ebony



veneered olive
circle wood - natural



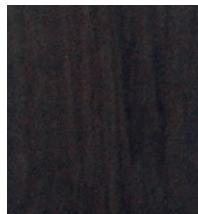
veneered olive
circle wood - walnut



veneered olive
circle wood - mahogany



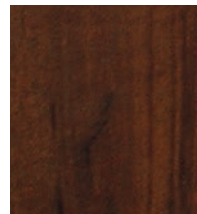
veneered olive
circle wood - chestnut



veneered olive
linear wood - ebony



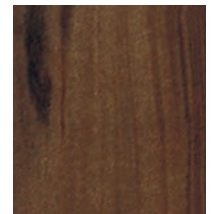
veneered olive
linear wood - natural



veneered olive
linear wood - walnut



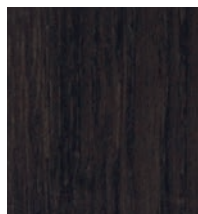
veneered olive
linear wood - mahogany



veneered olive
linear wood - chestnut



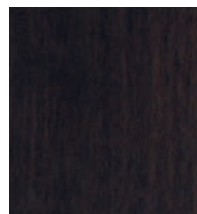
WOOD TABLES 2 Collection



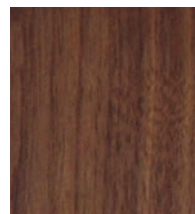
Veneered Oak wood,
anthracite - 11



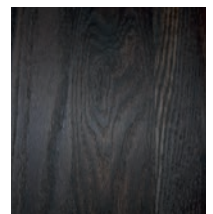
Veneered Oak wood,
chestnut - 3



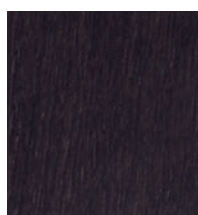
Veneered american
walnut wood, ebony - 5



Veneered american
walnut wood, naturel - 7



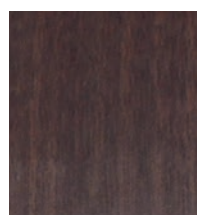
Veneered american
Oak wood, smoked



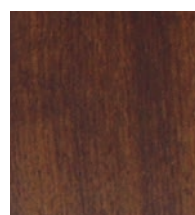
Veneered Oak wood,
ebony - 2



Veneered Oak wood,
naturel - 4



Veneered american
walnut wood, tobacco



Veneered american
walnut wood, brown - 8

ACCESSORIES

HEADBORDS & MORE



MORE INFO ON
WWW.MARIESCORNER.COM

the folding screen

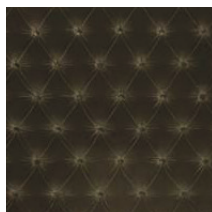
floyd **N**

Oak structure. Fully upholstered.
w: 173 cm x d: 5 cm x h: 203 cm



the headboards

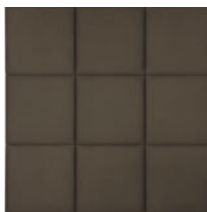
Always made to measure, the Marie's Corner range of bedheads comprises 4 types of stuffing. They can be made up in any of the brand's finishes or the customer's own finish.



lexington

headboard	small	large
width	100 cm	180 cm
height	105 cm	105 cm
length of fabric	1,55 m	3 m

Other sizes available.
Price on inquiry.



barrington

headboard	
width	160 cm
height	160 cm
length of fabric	4,4 m

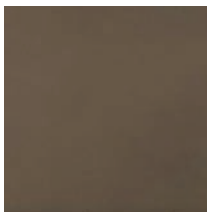
Other sizes available.
Price on inquiry.



harrison

headboard	small	large
width	100 cm	180 cm
height	130 cm	130 cm
length of fabric	1,8 m	4 m

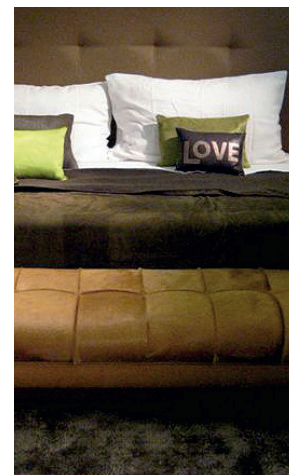
Other sizes available.
Price on inquiry.



hudson

headboard	small	large
width	100 cm	180 cm
height	120 cm	120 cm
length of fabric	1,5 m	2,2 m

Other sizes available.
Price on inquiry.





OUTDOOR

THE COLLECTION

**FROM LOUNGE TO GARDEN...
IN COMFORT & LUXURY!**

Marie's Corner introduces an original concept of outdoor furniture that includes all values of comfort and style developed over many years by the brand in their line of home furnishing.

With this innovative collection, Marie's Corner offers a new vision for design and functional outdoor furniture: an original style where indoor and outdoor pieces are sharing aesthetics, luxury, shapes, comfort and are treated as if one were indoors.



Choice of 5 stitching colors (Natural, Marine, Clove, Graphite and Orange)

laguna long

THE OUTDOOR COLLECTION

With its new approach Marie's Corner bids a tasteful solution for the development of the most beautiful homes, restaurants and hotels.



Venice pouf small



Laguna with orange stitching



Del Mar/1 - chair



Del Mar/2 - sofa



Venice pouf medium and large



Santa Monica double lounger

THE OUTDOOR COLLECTION

Laguna Swivel



Laguna Pouf

Laguna Long



Laguna series

The Del Mar series is made in the tradition of fine craftsmanship and designed for exceptional comfort. The collection includes an armchair, a longchair and matching footstool. The whole series is made of Sunbrella® fabrics for strength and durability. You will relax in quality and style with the collection.

Model	width	depth	height
Laguna	99 cm	91 cm	86 cm
Laguna Swivel	99 cm	91 cm	86 cm
Laguna Long	104 cm	147 cm	86 cm
Laguna Pouf	99 cm	46 cm	46 cm



Santa Monica

The Santa Monica Double Lounger is a unique eye-catching design with high comfort factor, contemporary features, striking appearance, exceptional quality craftsmanship and durability. The double lounger made of reticulated open cell foam is standard supplied with outdoor casters and top-stitching. With this double lounger you can lie down for a relaxing face-to-face chat.

Model	width	depth	height	seat height	arm height
Santa Monica	205 cm	99 cm	86 cm	48 cm	74 cm

Outdoor fabrics

The Marie's Corner outdoor collection uses performance Sunbrella® fabrics that are fade, stain, water, UV and mildew resistant.

A palette of textures and colours is available through different fabrics collections. More info on www.mariescorner.com

Weather covers

Designed to have better protection than ever against sunlight, rain, snow, sap, dirt and more. Our weather covers made of easy-to-clean waterproof Sunbrella® are available for each model of the outdoor collection.



Zuma

The Zuma armchair is made of premium Sunbrella® fabrics for strength and durability. They are standard supplied with outdoor casters and topstitching.

w: 58 cm x d: 71 cm x h: 106 cm
seat height 56 cm

Venice medium



Venice small



Venice large

Venice

With the filling of reticulated open cell foam, designed for outdoor use, the Venice outdoor pouf offer you maximum comfort. The pouf outdoor brighten your home with its bright colours.

Model	width	depth	height
Venice small	58 cm	58 cm	43 cm
Venice medium	137 cm	58 cm	43 cm
Venice large	107 cm	107 cm	43 cm

Marie's Corner outdoor Anatomy!

Marie's Corner outdoor collection consists of using rust-resistant aluminium feet that can withstand the outdoor elements and brackets are powder coated steel which emit no voc's and is exceptionally resilient.

frames are made of a 7/8 inch, 15-ply outdoor grade sustainable birch plywood and assembled with waterproof adhesive and stainless steel staples & fasteners

back cushions and pillows are filled with outdoor recycled fiber in a waterproof ticking

cushions, poly parts and seat deck are made of reticulated, open cell foam, designed for outdoor use; mildew resistant and allows water to drain

open intersection webbing on seat is used to allow draining

seat decks slope to the rear with drain built into the frame

seat deck material, cushions and pillow breathers, along with the base covers on slipcovered pieces, use base cloth sand, an open weave fabric that allows water to drain and lets the cushions and pillows breath



Del Mar series

The Del Mar series is made in the tradition of fine craftsmanship and designed for exceptional comfort. The collection includes a sofa, an armchair and matching footstool. The whole series is made of Sunbrella® fabrics for strength and durability. You will relax in quality and style with the Del Mar collection.

Model	width	depth	height	seat height	arm height
Del Mar/2	188 cm	87 cm	92 cm	40 cm	56 cm
Del Mar/SW	71 cm	87 cm	92 cm	40 cm	56 cm
Del Mar/1	71 cm	87 cm	92 cm	40 cm	56 cm
Del Mar/P	64 cm	48 cm	38 cm		



Newport

Our Newport beachcomber chair is a folding chair, with a frame of heat treated ash wood and a Batyline® fabric; an exceptional material combining design and comfort. The Newport beachcomber chair is available in 4 Batyline® colours: white, black, green and mink. The Batyline® textiles are distinctive due to their aesthetics and unmatched performance characteristics: exceptional tear strength and deformation resistance, UV resistance and 100% polyester and mould resistance, quick drying, freshness maintained and easy upkeep.

w: 59 cm x d: 86 cm x h: 97 cm



WORLD REFERENCES



Luciano | Spa, Belgium

Every day we are charmed by the pieces we produce in our workshops, at the request of our customers, for their projects, with a choice of finishes we had only envisaged.



MORE INFO ON
WWW.MARIESCORNER.COM



Château de la poste | Ronchennes, Belgium



Bonbon | Brussels, Belgium



T notarishuys | Diksmuide, Belgium



Le Crans | Crans-Montana, France



Bonbon | Brussels, Belgium

They stand out for their strength and good taste and play a fundamental role in the interiors conceived by professional designers and amateurs too. And we are very proud of that.

SOME REFERENCES OVER THE WORLD

Many clients, brands, architects and decorators across the world put their trust in Marie's Corner and achieve exceptional results...



Le Jardin

Restaurant, Belgium

Le Jardin in Knokke is the famous, starred restaurant of Chef Christophe Van den Berghe who was awarded the Certificate of Excellence 2013. The interior of this fine culinary temple was renovated entirely at the end of 2012 under the aegis of Christie's interior decorators.

Marie's Corner responded to the call of the architects and of the project with Tukori, Tukono and Tanaka tables made to measure. Boston and Denver seating models were chosen and finalized in accordance with the customer's finishing specifications.

This project confirmed that Marie's Corner belongs to partners of choice called upon for the finest eateries and starred restaurants – a token of quality and appreciation.

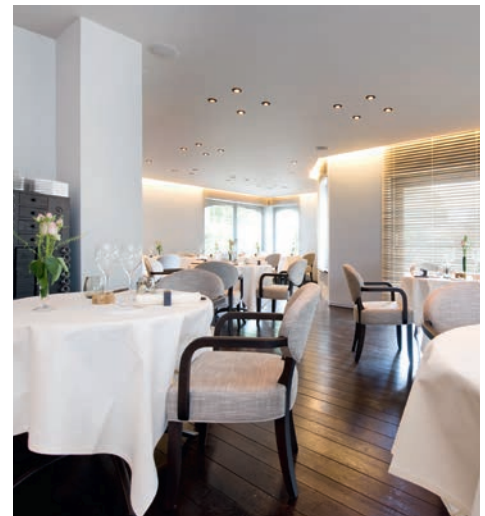


Bonbon

Restaurant in Brussels, Belgium

The challenge faced for this project with the architect Michèle Verhelst (IGLOO), was to offer style and comfort for an exceptional moment, commensurate with the gastronomic quality of this starred restaurant of Chef Christofer Hardiquet.

The choices for this project fell on Dartmouth armchairs for the reception area and Manchester chairs and armchairs for the restaurant proper, and we developed the same Manchester model in high stool for the bar-kitchen area.



Hostellerie de la Farandole

Hôtel, Restaurant in Sanary-sur-Mer, France

In the very heart of Provence, a four-star hotel and gastronomic restaurant, with 27 rooms, including 5 suites, which opened in August 2011.

This is a very fine project for Marie's Corner, comprising bed heads, sofas, armchairs, chairs and tables. The models chosen are: Hollywood sofa and Kansas sofa-bed, Danville, Chelsea, Judd, Flint et Houston armchairs, Brunswick chairs and Texas stools, Cube and Loft stools and finally Porto, Tanaka and Tukori tables. More than 280 items in all were supplied for this project.

This very beautiful collection was put together in cooperation with the interior decorators. The finishing works from the Marie's Corner range were subjected to flame-retardant treatment.





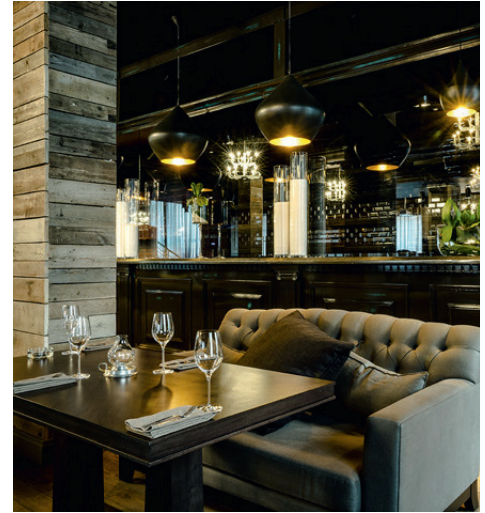
Shelk

Restaurant, Russia

If you are looking for an elegant, modern and comfortable place to hang out in the center of Moscow. This restaurant is the ideal place to spend time with family and friends or to hold business meetings.

For Marie's Corner, this is a very fine project in an astounding interior, where the architects have laid out and combined the notion of luxury and show in an original manner.

The models chosen are: Georgia, Soho, Memphis and Hollywood sofas, Sydney, Houston, Chelsea, Jackson, and Copperfield armchairs, and Stockton poufs. The tables chosen are part of the Tukono and Tanega models in different sizes.



The Kottage

Hôtel, Restaurant, Belgium

The Kottage is two and a half hectares of land, a "hotel-lodge" made in local stones where people could enjoy a calm and relaxing stay and/or of challenges and festivities. This cozy hotel, where good taste rhymes with comfort just like home, was developed by the team of The Knokke-Out, which as always, has created quality premises to feel good in.

Marie's Corner responded to this very fine project by combining the refined style and color of its Club-House, Judd, Anniston and Dakota models. The finishing was chosen from the brand's range of fabrics subjected to flame-retardant treatment. The models blend perfectly with the natural setting of this Ardennes structure made of wood and stone.

More references:

Austria

Vienna / The Steigenberger

Belgium

Knokke / Restaurant Jardin
Knokke / Restaurant Sel Gris
Knokke / Restaurant Cuines 33
Bruges / Prinsenhof Hotel
Brussels / Restaurant Cospaia
Brussels / Restaurant La Truffe Noire
Brussels / The Dominican Hotel
Brussels / Restaurant BonBon
Leuven / kloosterhotel
Ronchinnes / Hôtel De La Poste
Waasmunster / Restaurant Roosenberg
Villers La Ville / Golf de Rigenée

France

Valence / Maison Pic
Baune / Hôtel De La Poste
Courchevel / Hôtel Le Lana

Peisey Vallandry / Le Club Med.

Honfleur / Hôtel l'Absynthe
Hérépian / Hôtel Couvent d'Hérépian
Megèves / Hôtel les Loges Blanches
Jausiers / Villa Morelia Château Hotel
Sanary sur Mer / La Farandole Hotel
Paris / Hôtel Des Académies
Paris / Hôtel Burgundy
Mougins Village / Restaurant Place de Mougins
Le cannet / Restaurant Villa Arcange
Avize / Hotel les Avisés
Barbotan / Les thermes de Barbotan
Barbotan / La bastide Gasconne
Paris / Hotel Mercure
Mery Sur Oise / Le chateau de Mery
Marsolan / Hotel Lous Grits
Villiers-Le-Mahieu / Château de Villiers-Le-Mahieu
Cannes / Hotel Martinez

Germany

Hamburg / The George Hotel
Berlin / Hotel Waldorf Astoria

Ile Maurice

Le Royal Palm

Ireland

Dunsany / Hotel Killeen Castle

Italy

Venice / Palazzina Grassi Hotel

Libanon

Beiruth / Restaurant Le Gray

Netherlands

's Graveland / "Loggere"

Portugal

Lisbon / Hotel Heritage

Russia

Moscow / Next Door Hotel
Moscow / Restaurant Aist
Moscow / Beefbar
Moscow / Cafe-bar Moloko
Moscow / Savin Hall
Moscow / Restaurant Veterok
Moscow / Restaurant La Balcon
Sochi / Grand Hotel Rodina
Kazan / Luciano SPA

Ukraine

Lvov / Hotel Astoria

Switzerland

Crans sur Sierre / Hôtel Le Crans
Geneva / Kempinski Hotel
Geneva / Swissotel Metropole
Lausanne / Palace Hotel
Neuchâtel / Hôtel Le Palafitte
Salavaux/ Hotel Schloss, ...

marie's corner

OVERVIEW

COLLECTION 2014



Marie's Corner wants to be part of an increasingly digital and efficient world.

That's why, in this new catalogue, we've simplified all the information relating to the models presented. We've used the QR code so that you can access the Website easily and obtain all the additional information you need, including photographs, descriptions and details of each product regarding their use, how they fit in and their care.

MORE INFO ON WWW.MARIESCORNER.COM

SOFAS



ARMCHAIRS



CHAIRS



POUFS





TABLES



& MORE...



OUTDOOR
SEE PAGE 85



marie's
corner

Marie's Corner
Avenue Edison 20 | 1300 Wavre | Belgium
T +32 10 84 96 80
F +32 10 84 94 80
contact@mariescorner.com
www.mariescorner.com